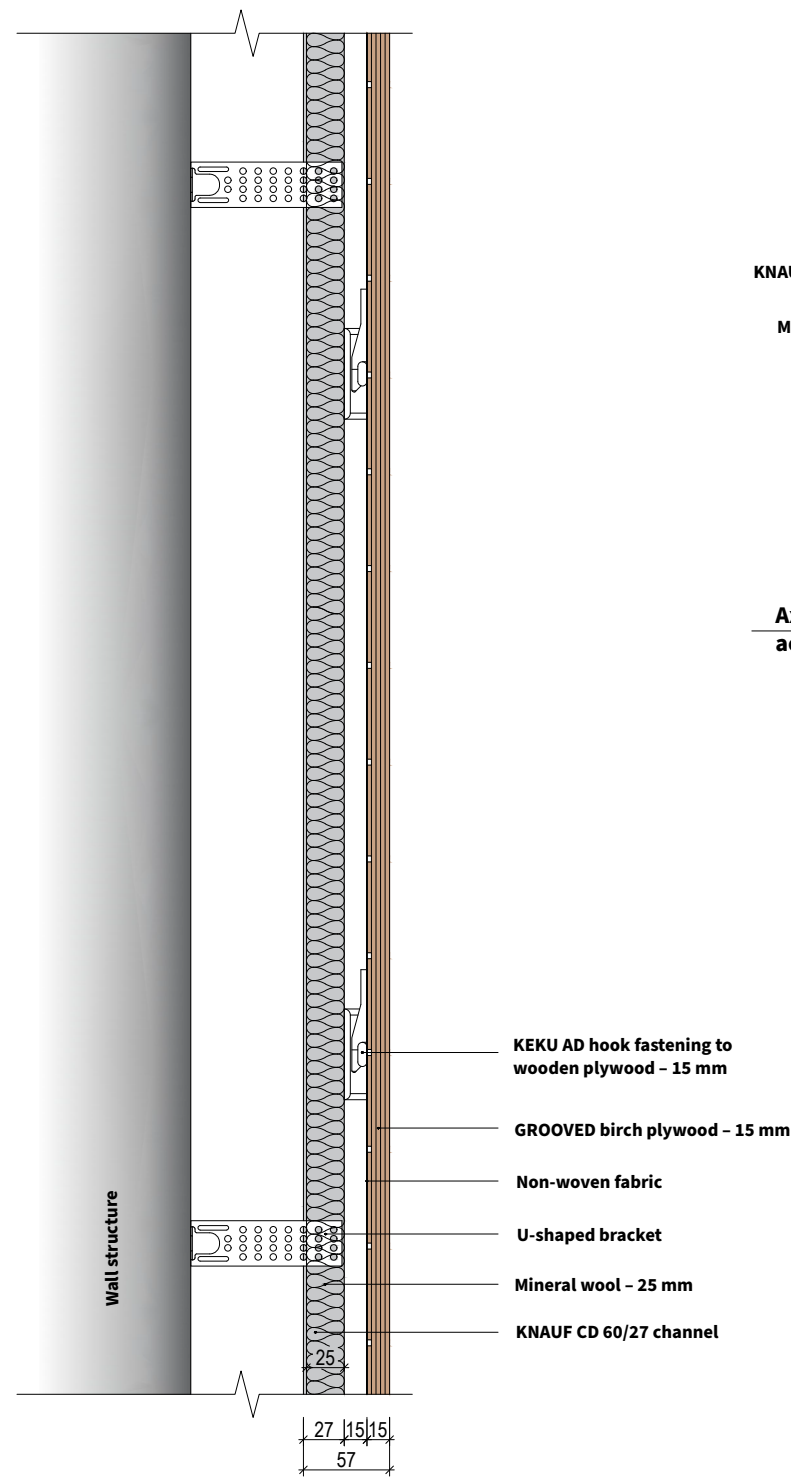
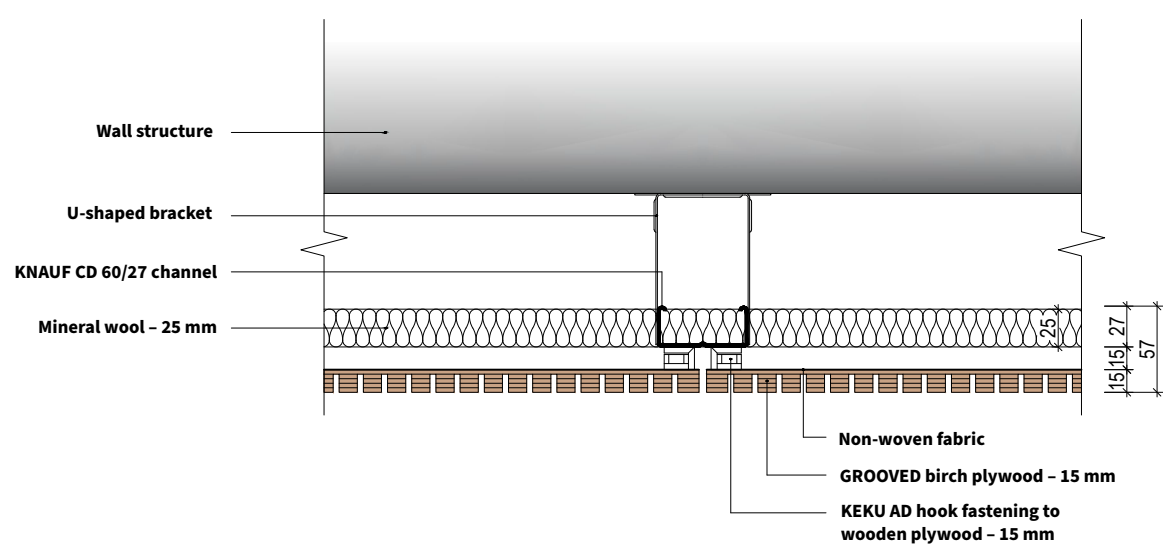


GROOVED panel installation method using KNAUF CD channels and KEKU AD fasteners

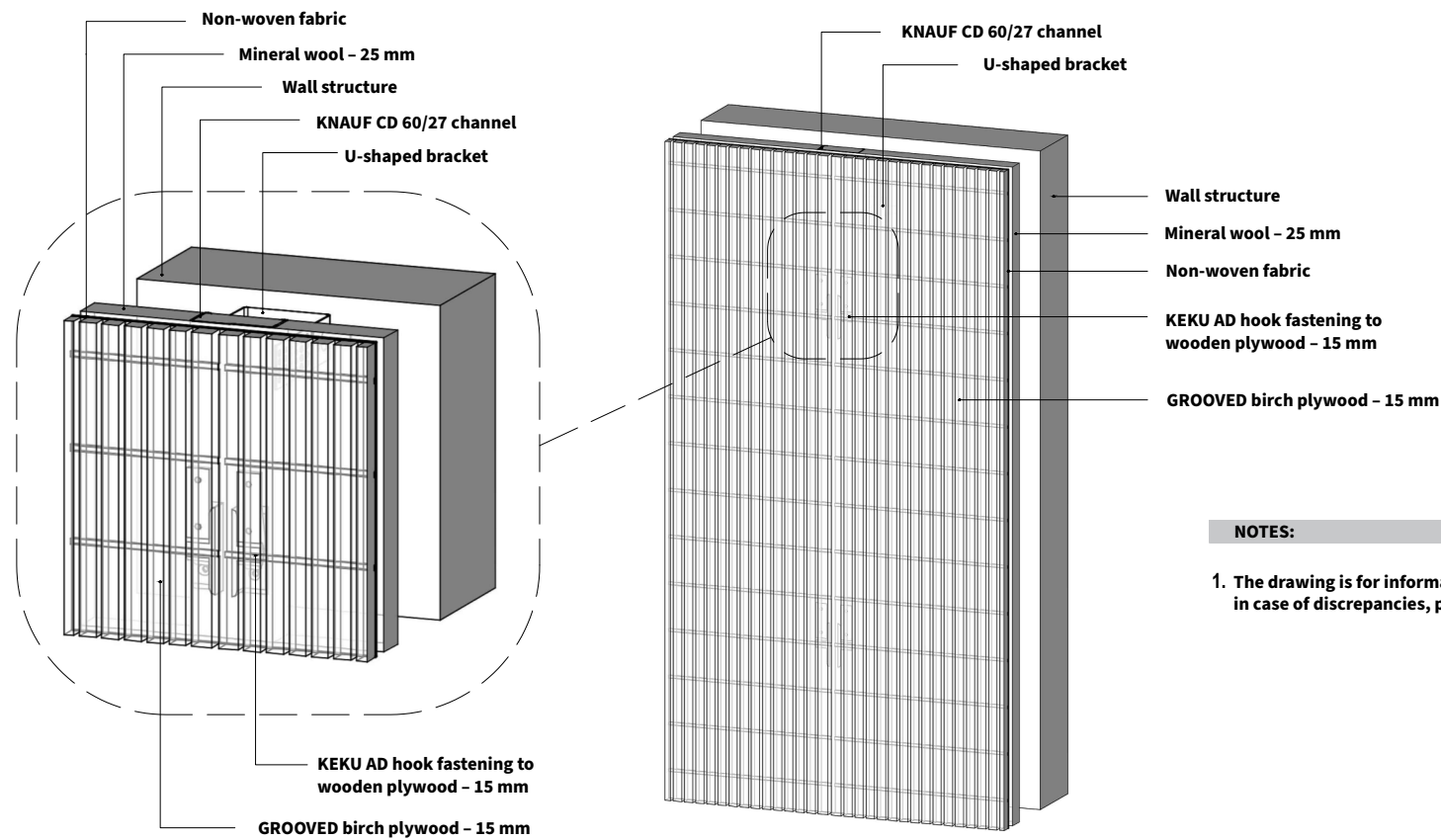
Acoustic panel mounting system SECTION – Scale 1:5



Acoustic panel mounting system TOP VIEW – Scale 1:5

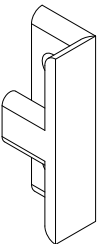


Axonomy of the acoustic panel system



KEKU AD mounting system

KEKU AD –intended for mounting on KNAUF channel.



KEKU EH –intended for mounting on plywood panel

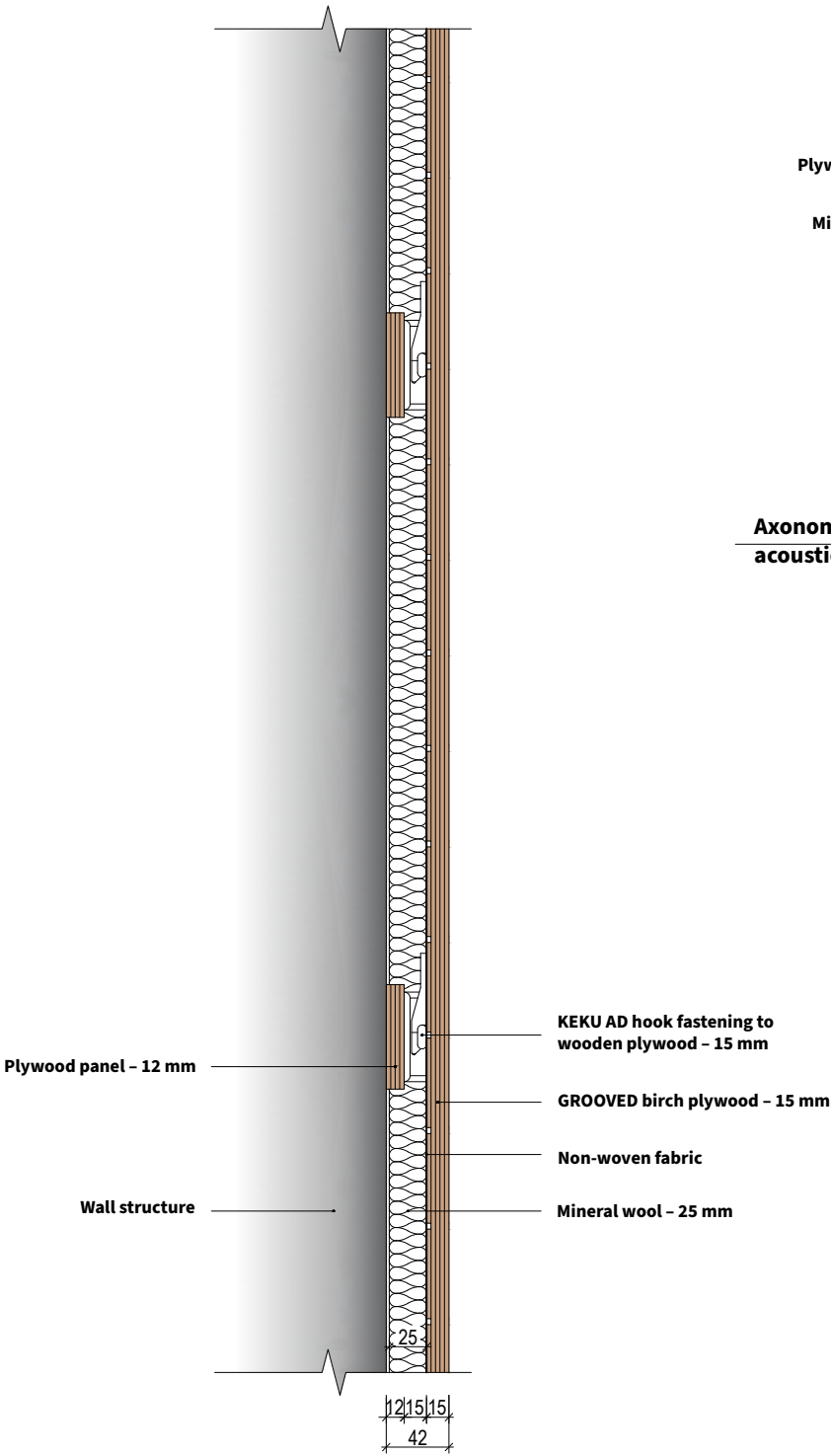


NOTES:

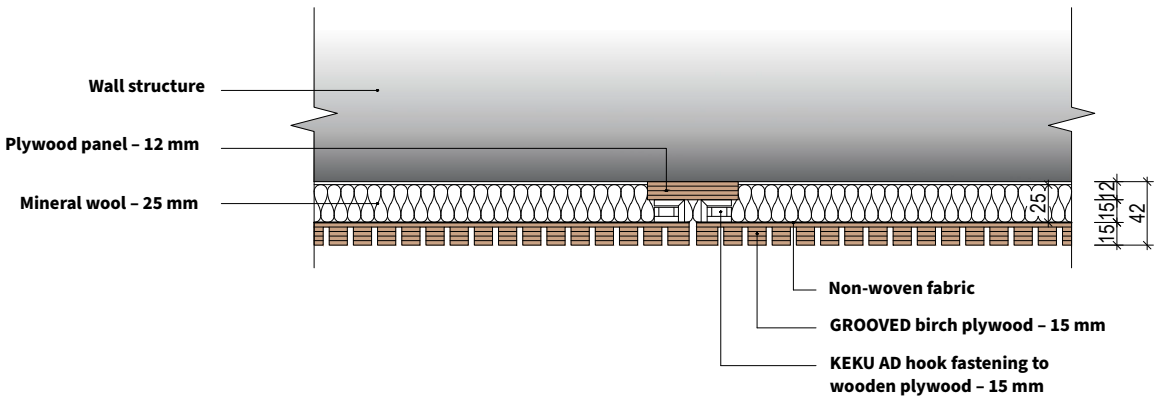
1. The drawing is for informational purposes only, in case of discrepancies, please contact the manufacturer.

GROOVED panel installation directly onto the wall surface using KEKU AD fasteners

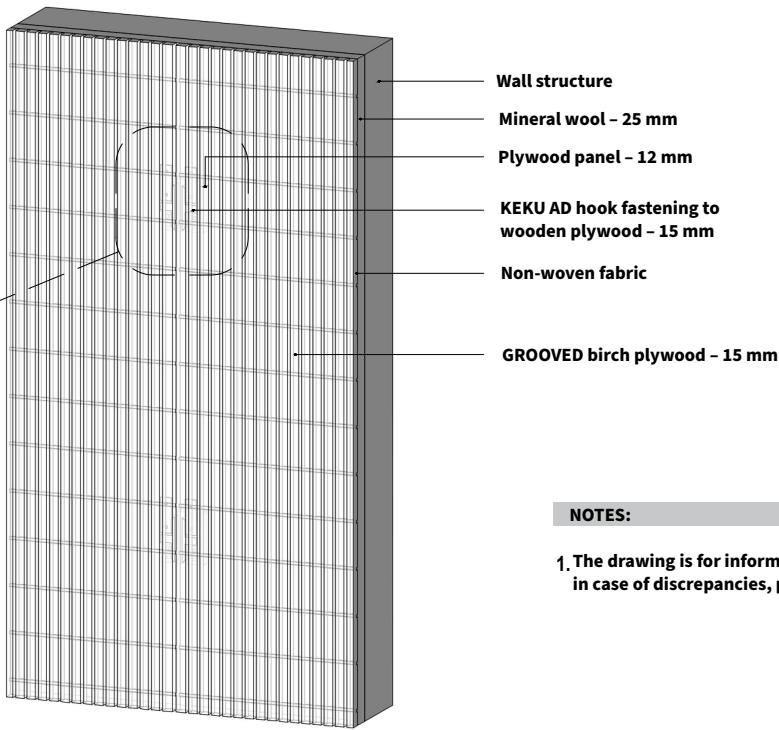
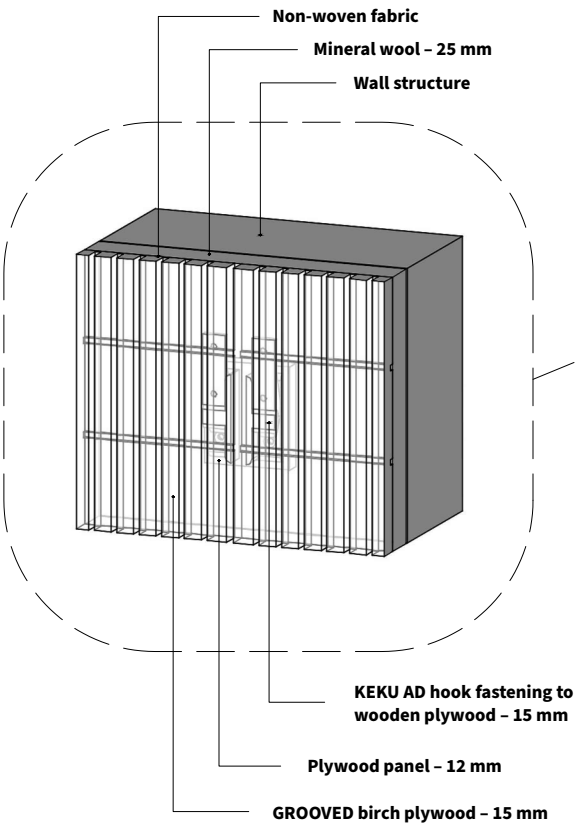
Acoustic panel mounting system SECTION – Scale 1:5



Acoustic panel mounting system TOP VIEW – Scale 1:5

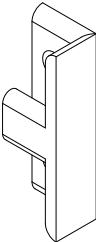


Axonometry of the acoustic panel system



KEKU AD mounting system

KEKU AD – intended for mounting on KNAUF channel.



KEKU EH –intended for mounting on plywood panel

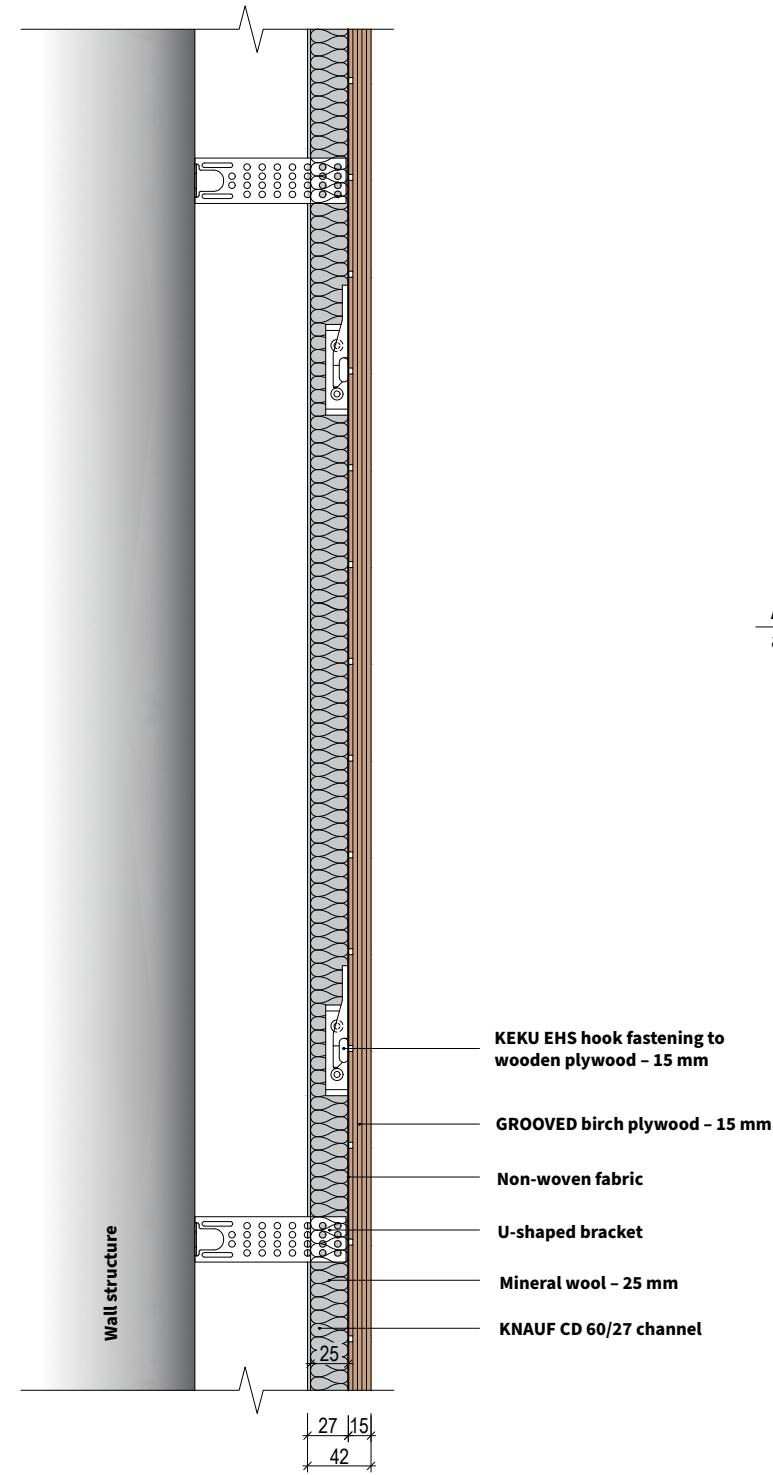


NOTES:

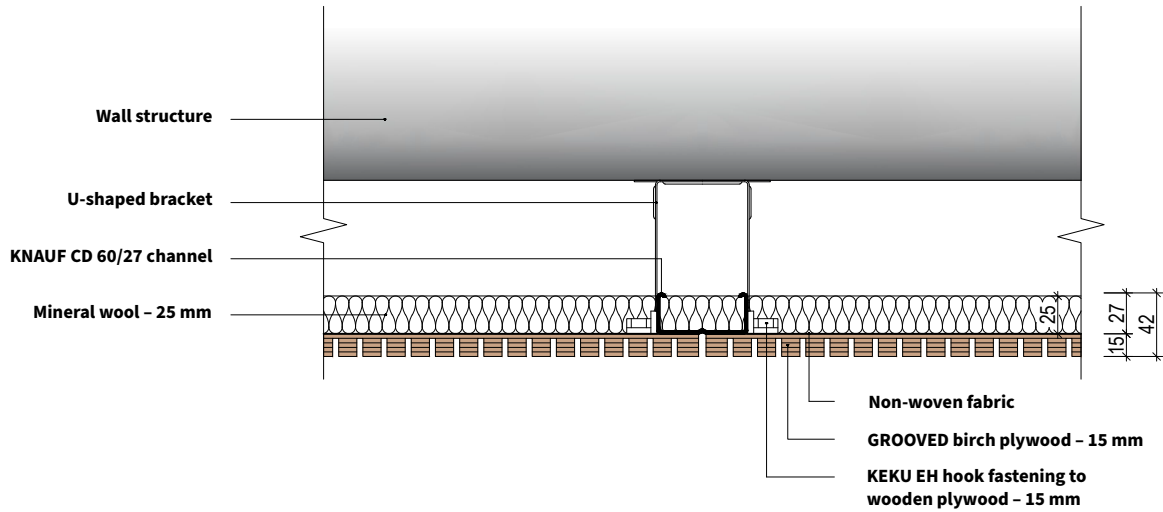
1. The drawing is for informational purposes only, in case of discrepancies, please contact the manufacturer.

GROOVED panel installation method using KNAUF CD channels and KEKU EH fasteners

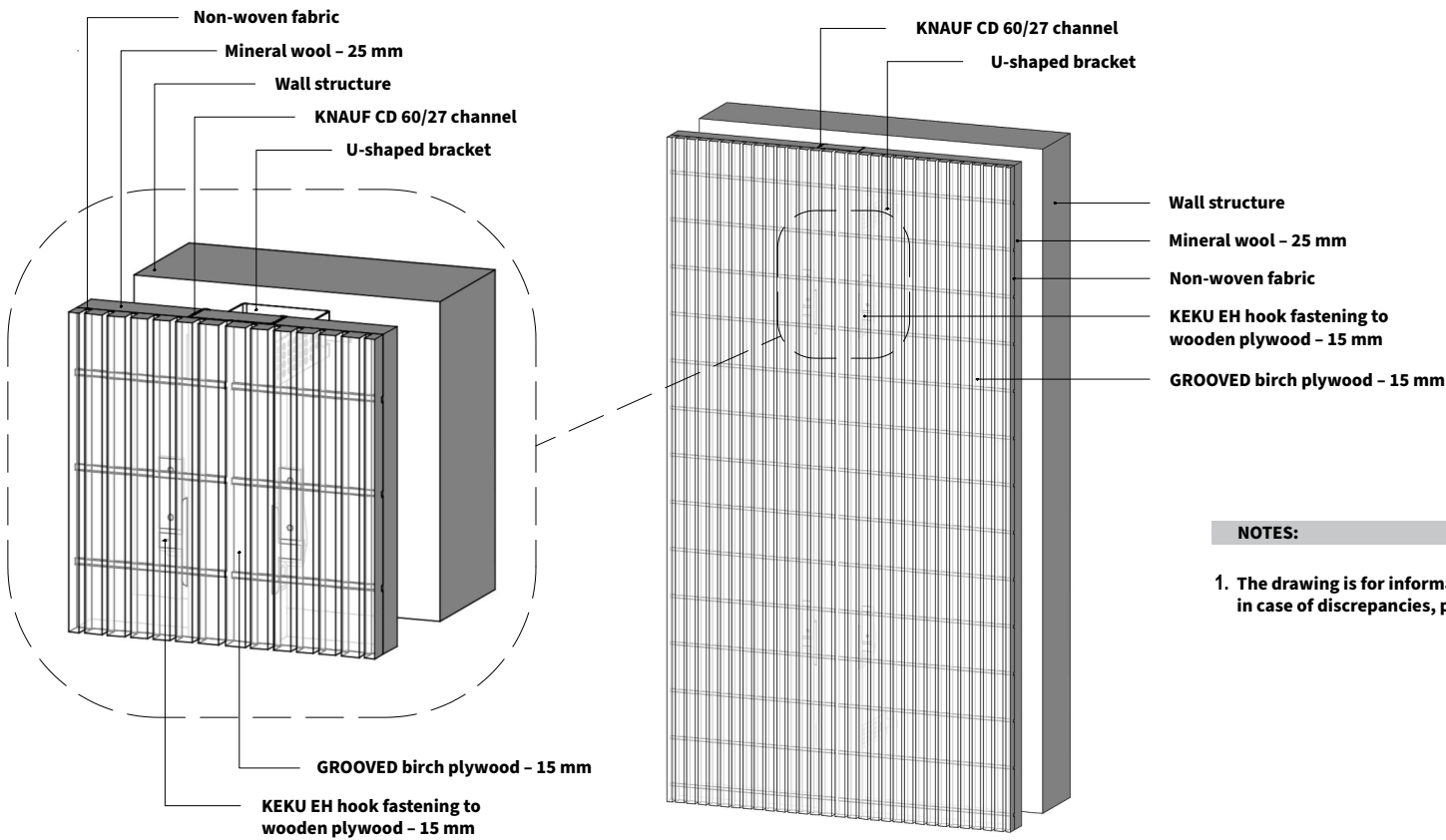
Acoustic panel mounting system SECTION – Scale 1:5



Acoustic panel mounting system TOP VIEW – Scale 1:5

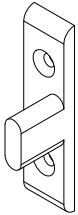


Axonometry of the acoustic panel system



KEKU AD mounting system

KEKU EH –intended for mounting on KNAUF channel.



KEKU EH –intended for mounting on plywood panel

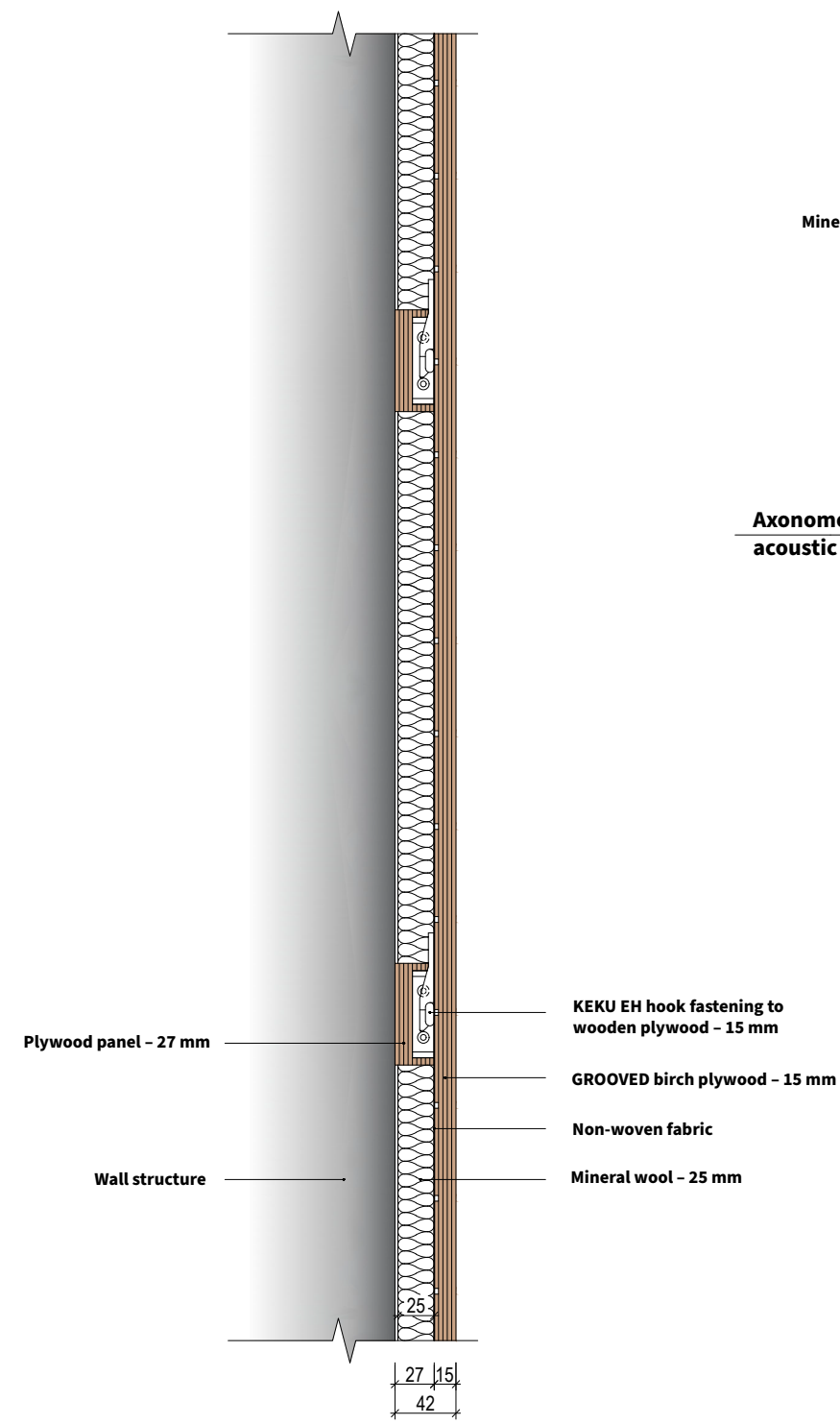


NOTES:

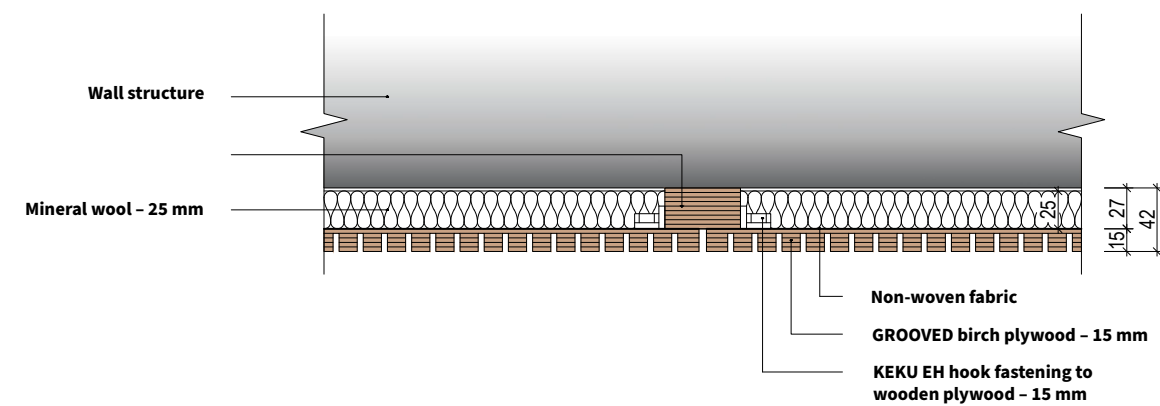
1. The drawing is for informational purposes only, in case of discrepancies, please contact the manufacturer.

GROOVED panel installation directly onto the wall surface using KEKU EH fasteners

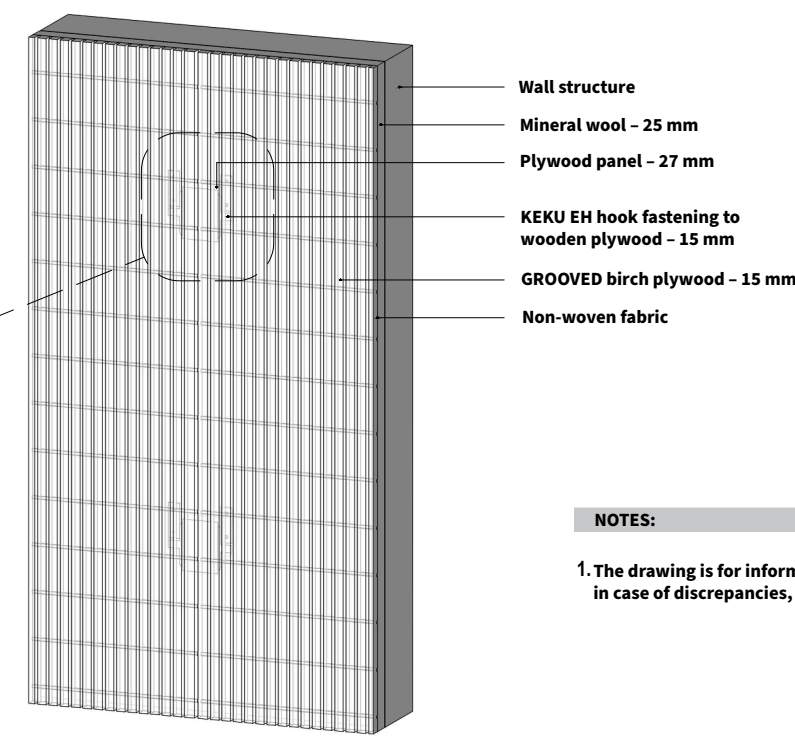
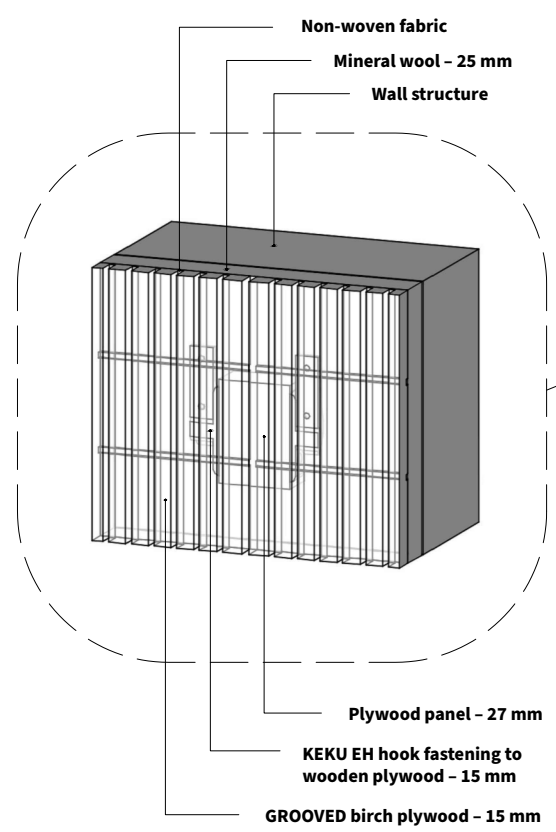
Acoustic panel mounting system SECTION – Scale 1:5



Acoustic panel mounting system TOP VIEW – Scale 1:5

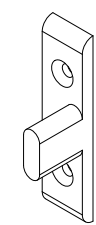


Axonometry of the acoustic panel system

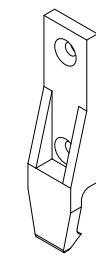


KEKU AD mounting system

KEKU EH –intended for mounting on KNAUF channel.



KEKU EH –intended for mounting on plywood panel



NOTES:

1. The drawing is for informational purposes only, in case of discrepancies, please contact the manufacturer.