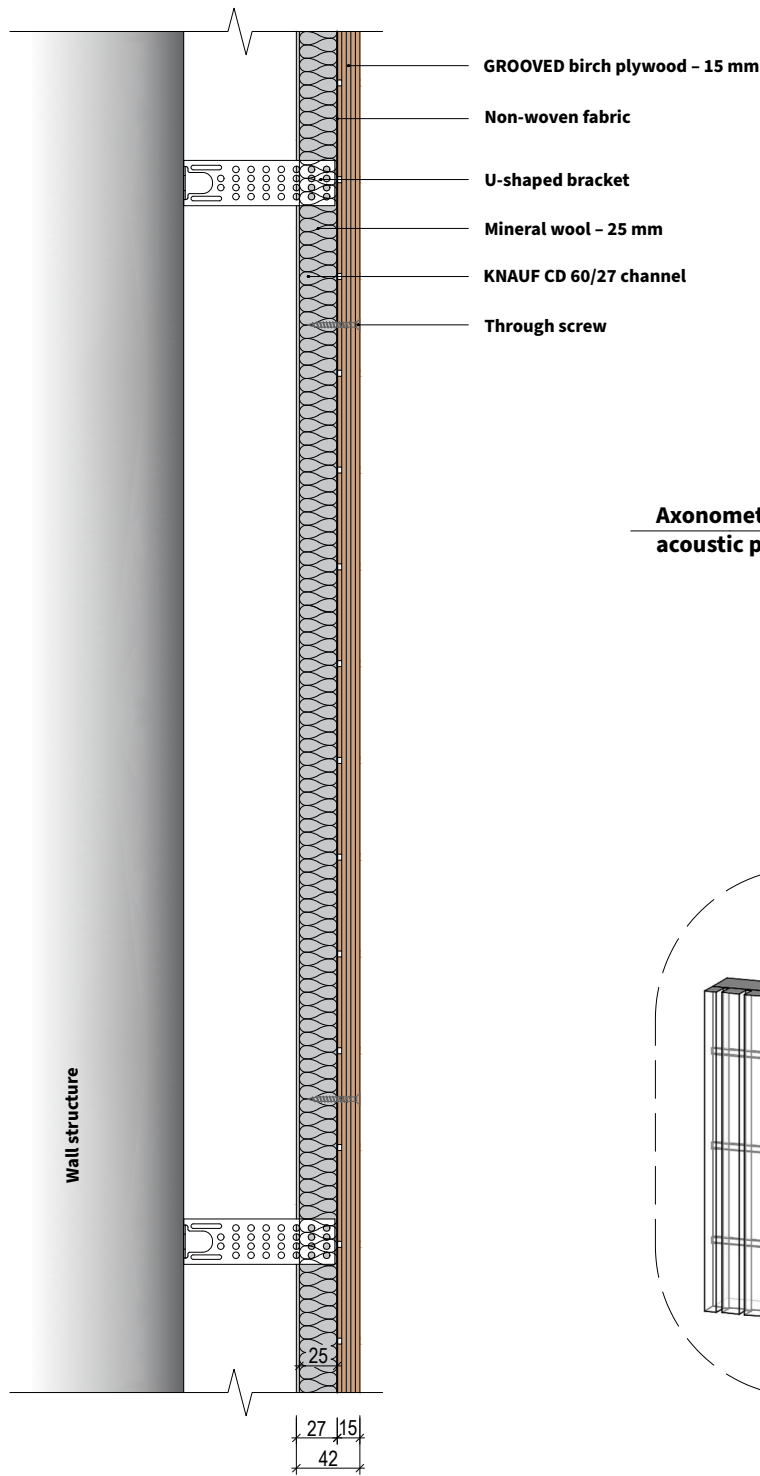
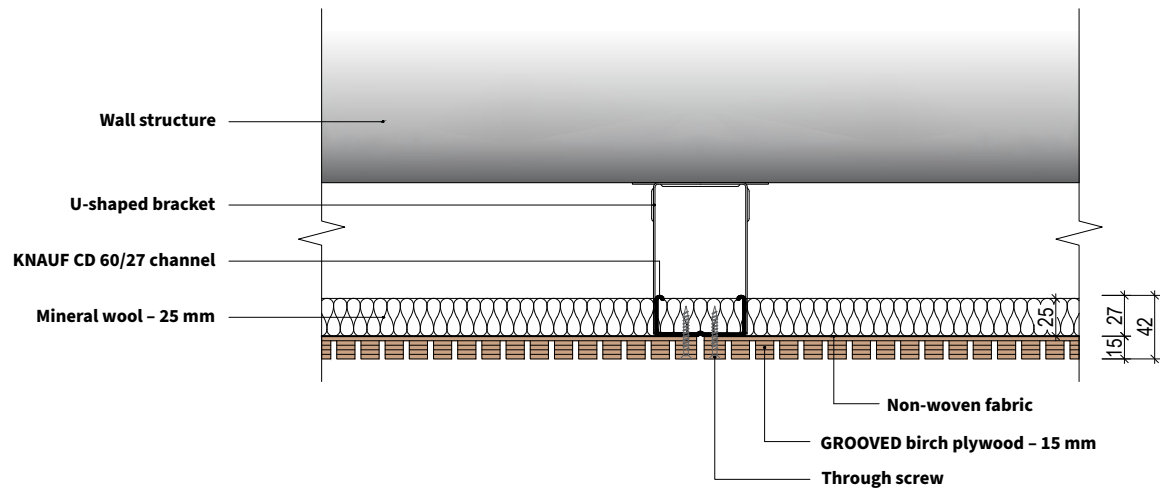


Installation method for GROOVED PANELS  
using KNAUF CD channels with through-hole or countersunk fixing.

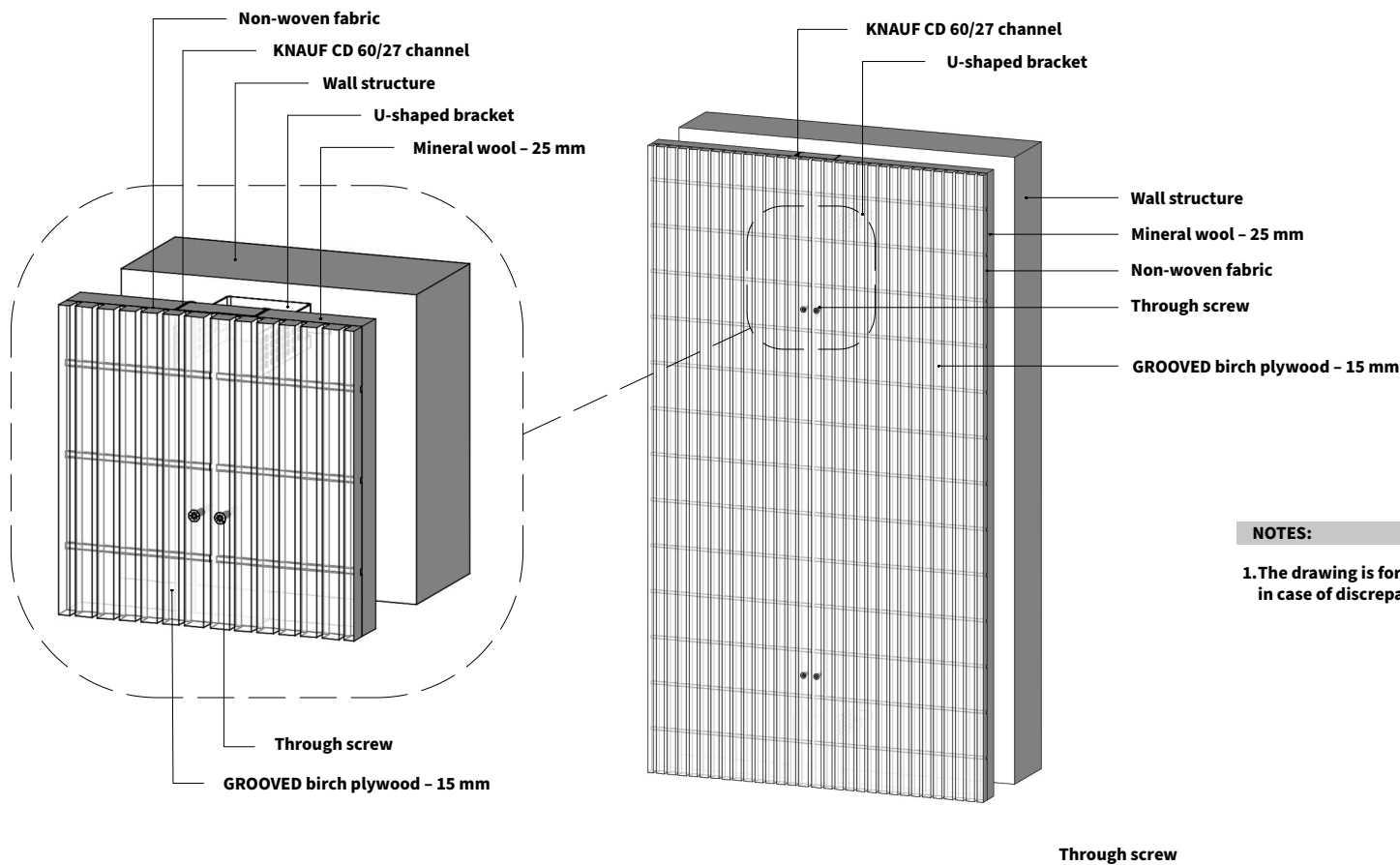
Acoustic panel mounting  
system SECTION – Scale 1:5



Acoustic panel mounting  
system TOP VIEW – Scale 1:5



Axometry of the  
acoustic panel system

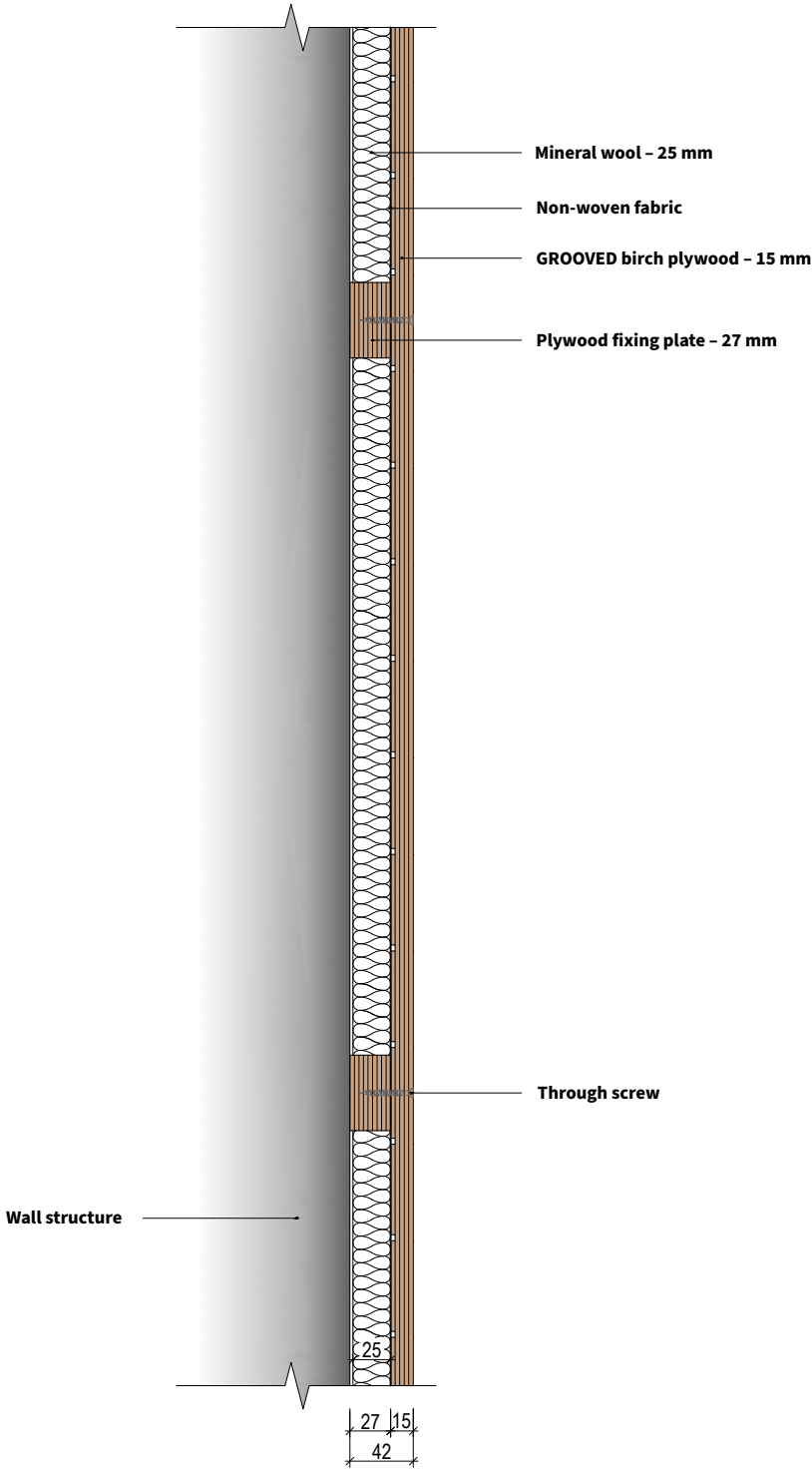


**NOTES:**

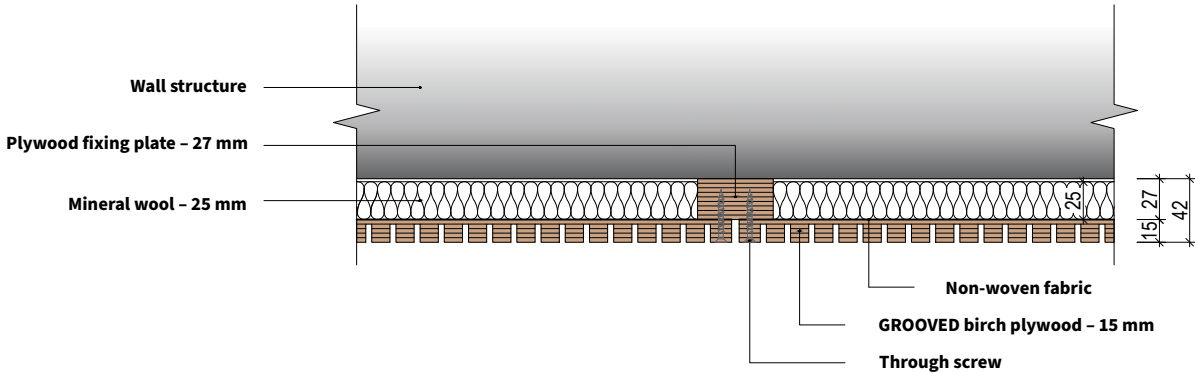
1. The drawing is for informational purposes only,  
in case of discrepancies, please contact the manufacturer.

GROOVED panel installation directly onto the wall surface using through-hole / countersink technique

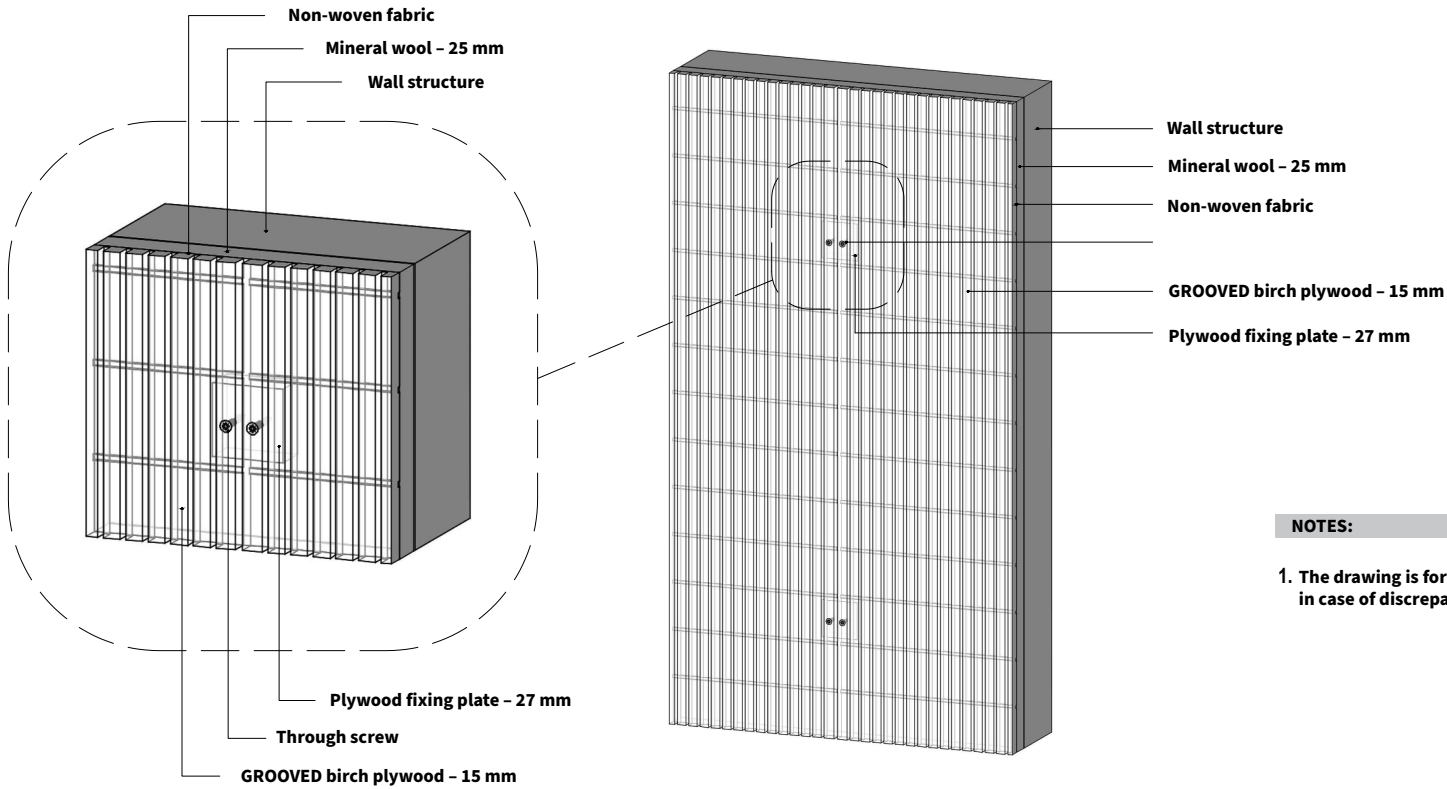
Acoustic panel mounting system SECTION – Scale 1:5



Acoustic panel mounting system TOP VIEW – Scale 1:5



Axonometry of the acoustic panel system



NOTES:

1. The drawing is for informational purposes only, in case of discrepancies, please contact the manufacturer.