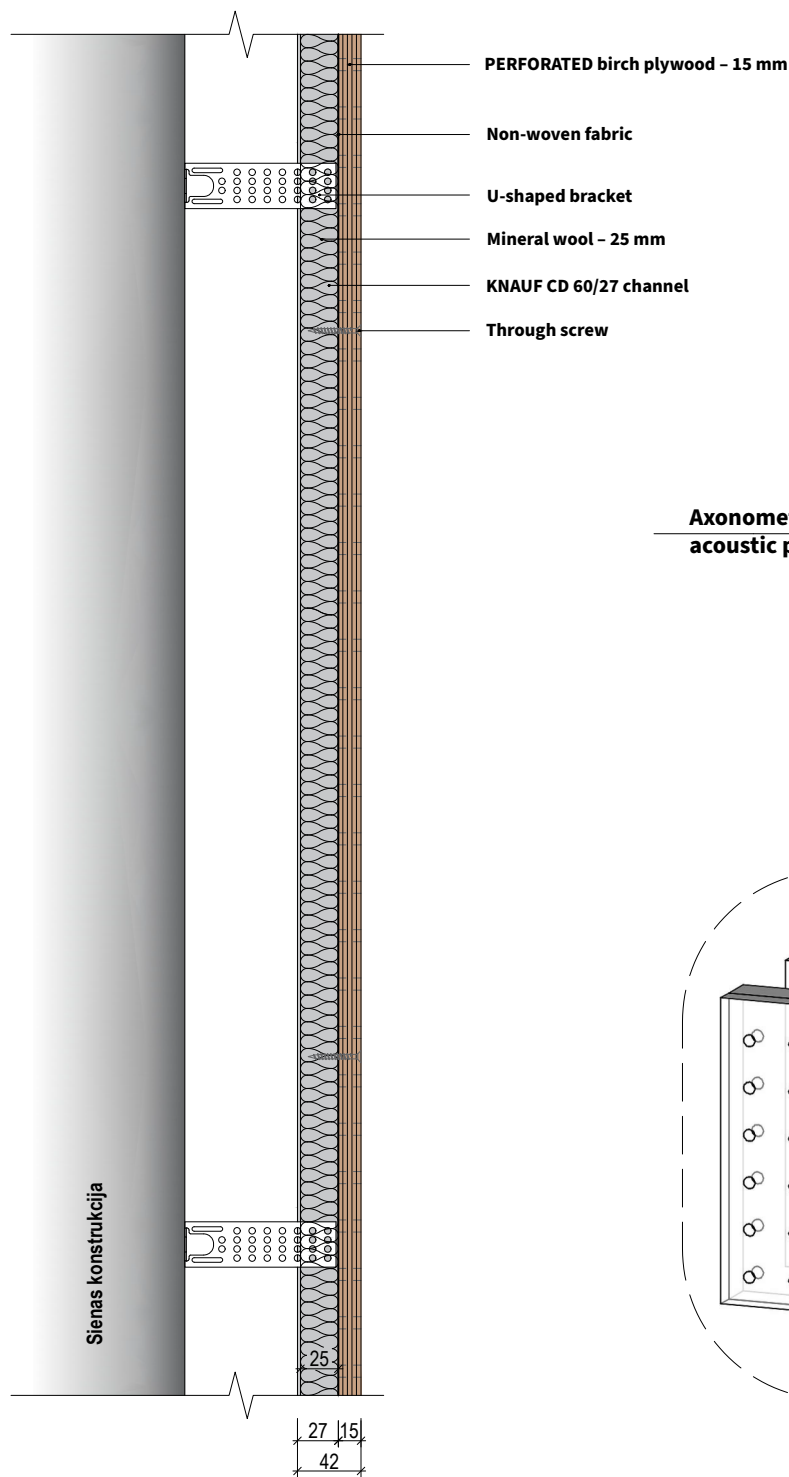
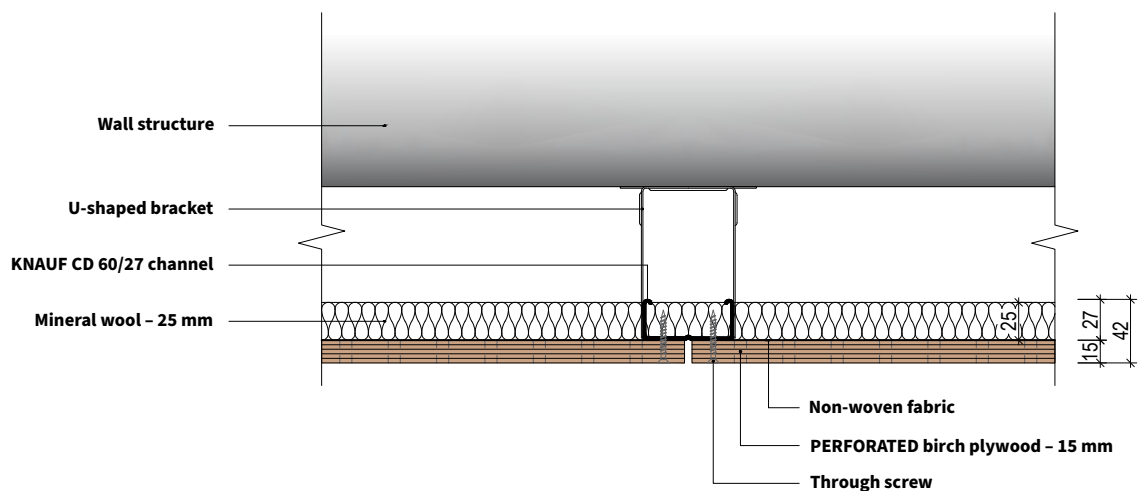


Installation method for PERFORATED PANELS  
using KNAUF CD channels with through-hole or countersunk fixing.

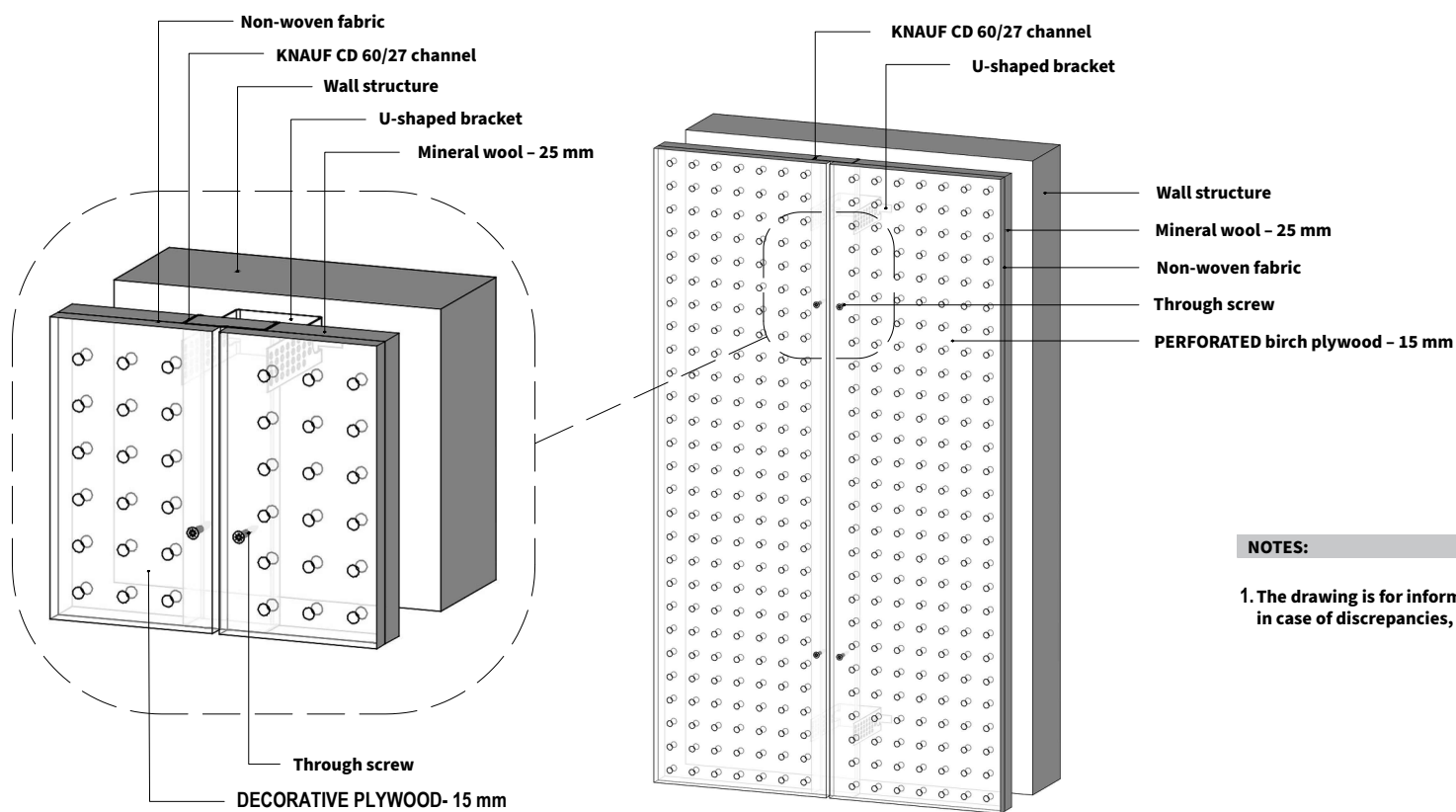
Acoustic panel mounting  
system SECTION – Scale 1:5



Acoustic panel mounting  
system TOP VIEW – Scale 1:5



Axonometry of the  
acoustic panel system

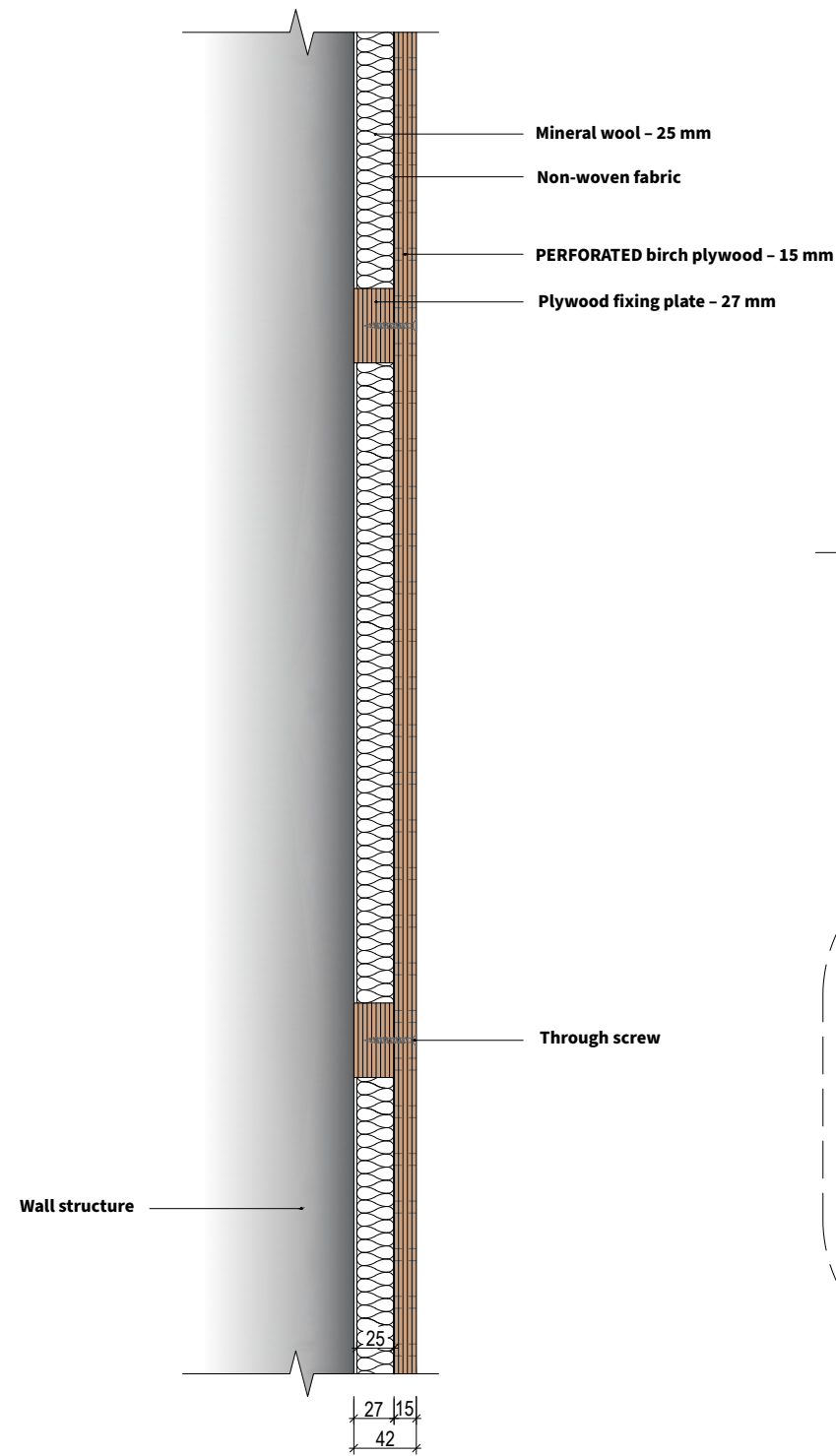


NOTES:

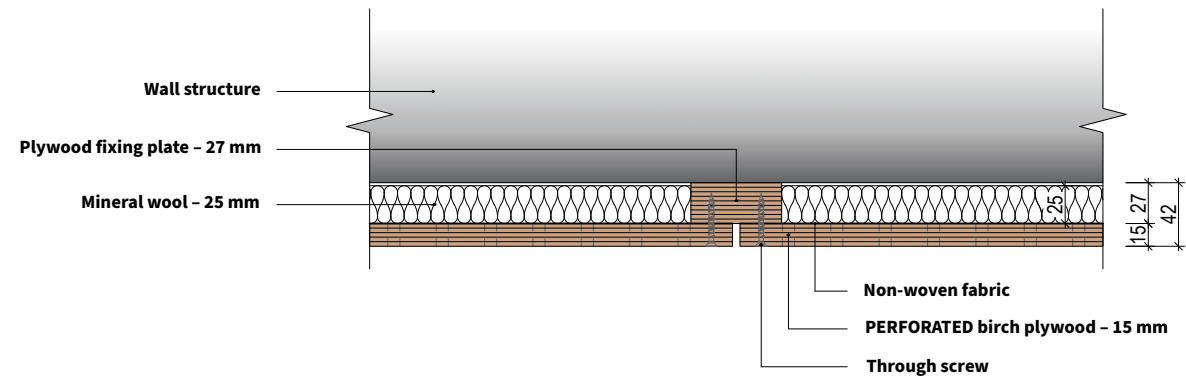
1. The drawing is for informational purposes only,  
in case of discrepancies, please contact the manufacturer.

PERFORATED PANEL installation directly onto the wall  
surface using through-hole / countersink technique

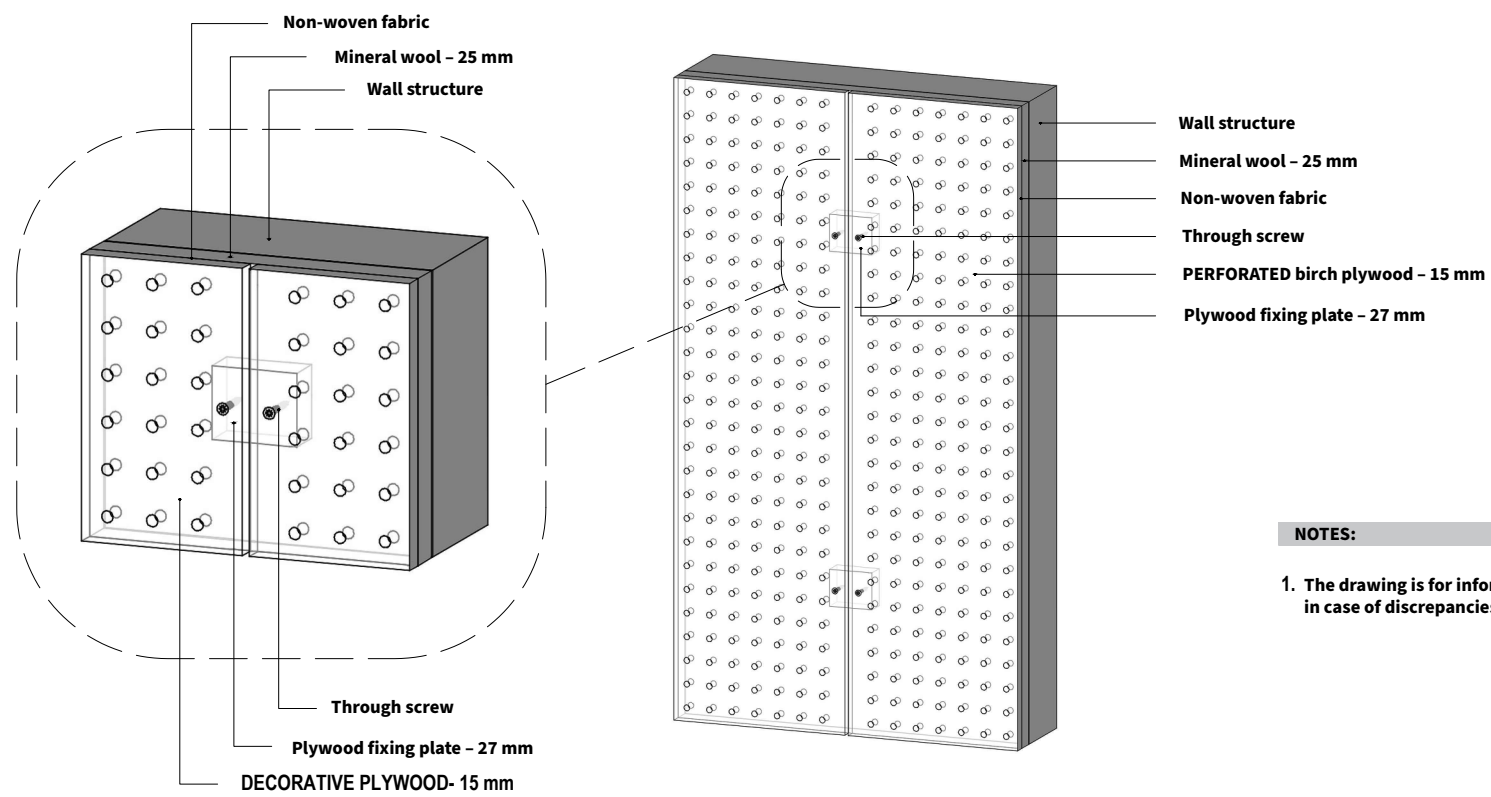
Acoustic panel mounting  
system SECTION – Scale 1:5



Acoustic panel mounting  
system TOP VIEW – Scale 1:5



Axonometry of the  
acoustic panel system



NOTES:

1. The drawing is for informational purposes only,  
in case of discrepancies, please contact the manufacturer.