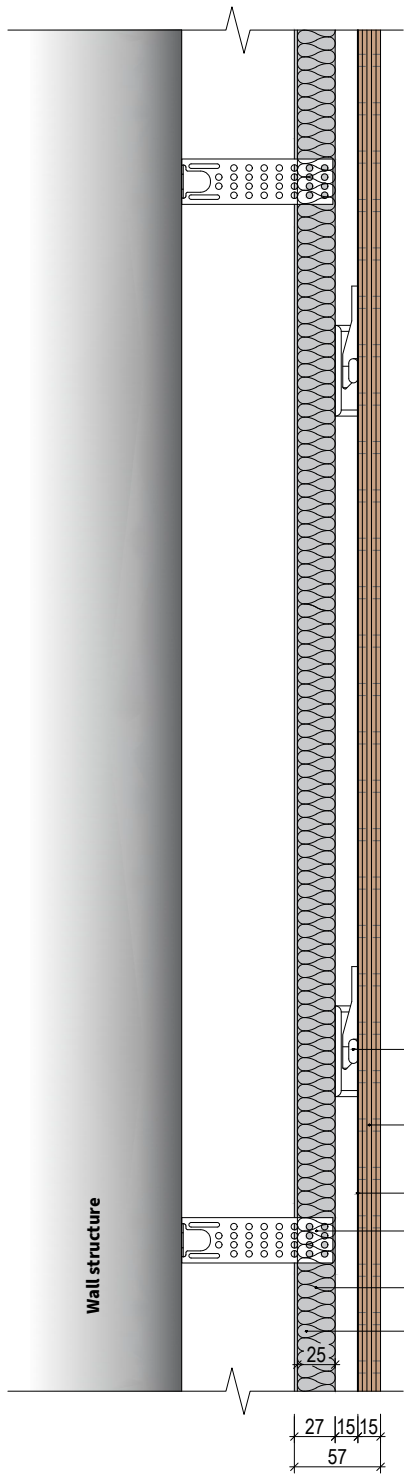
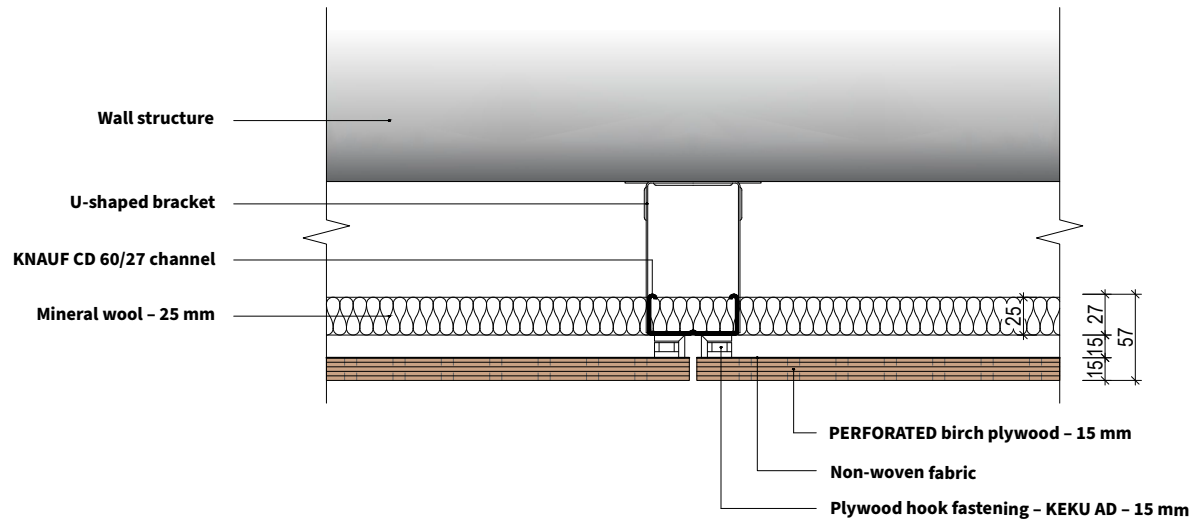


PERFORATED panel installation method using KNAUF CD channels and KEKU AD fasteners

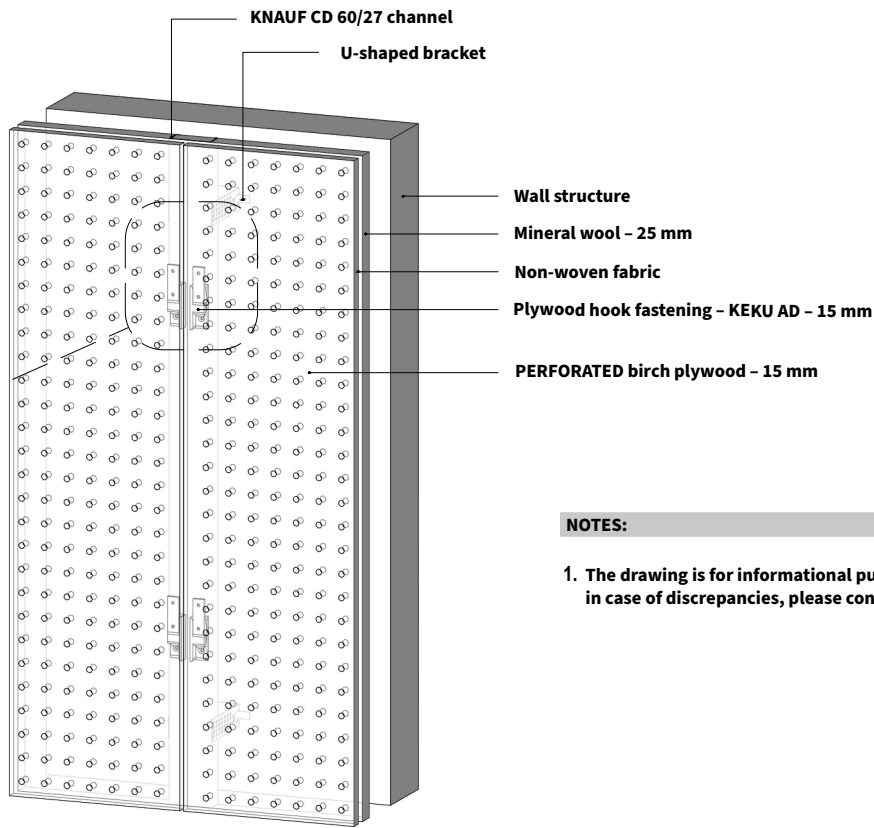
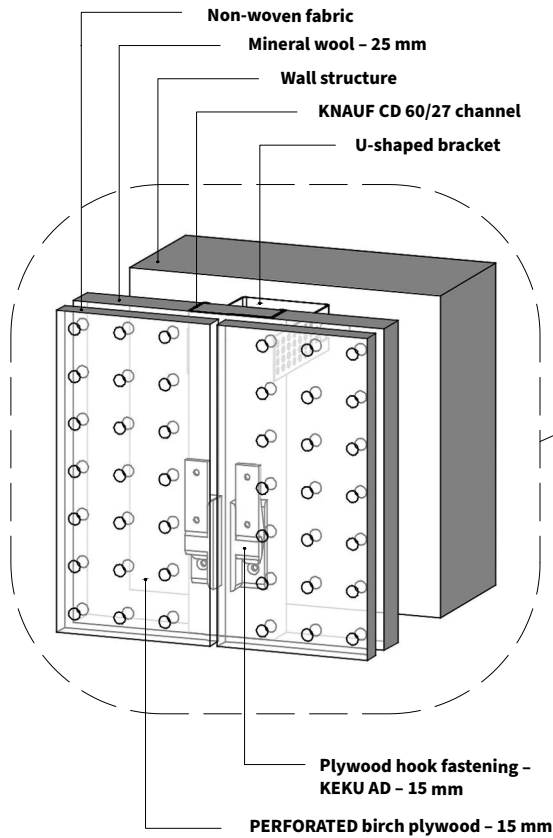
Acoustic panel mounting system SECTION – Scale 1:5



Acoustic panel mounting system TOP VIEW – Scale 1:5

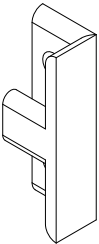


Axonometry of the acoustic panel system



Fastening system KEKU AD

KEKU AD – to be fastened to KNAUF channel



KEKU AH – to be fastened to plywood panel.

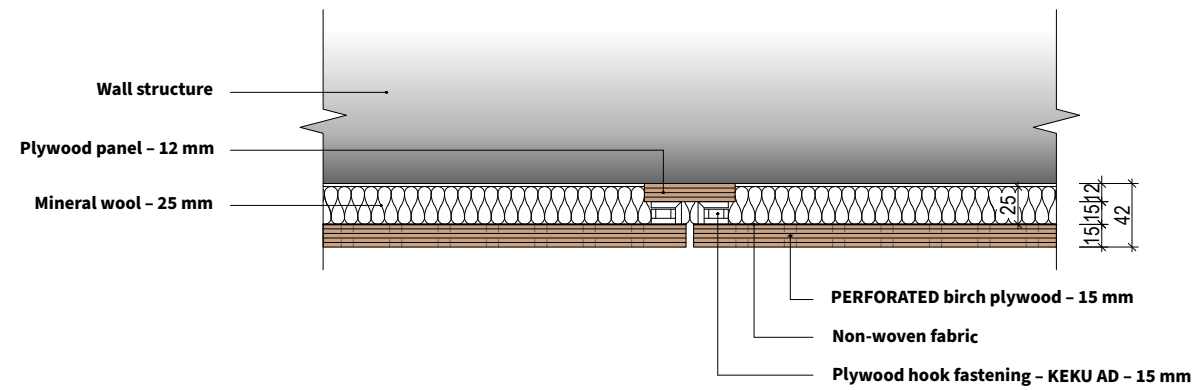


NOTES:

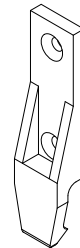
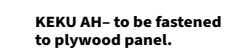
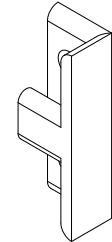
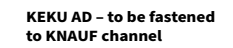
1. The drawing is for informational purposes only, in case of discrepancies, please contact the manufacturer.

Acoustic panel mounting system SECTION – Scale 1:5

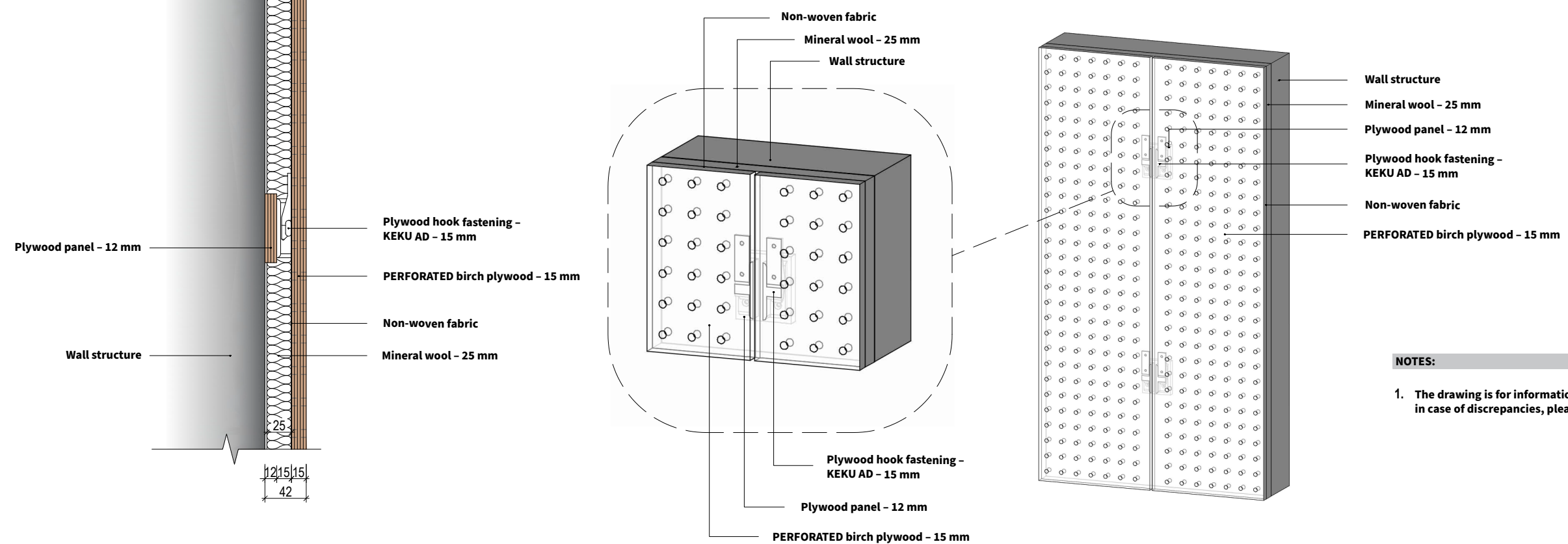
**Acoustic panel mounting
system TOP VIEW – Scale 1:5**



Fastening system Keku AD



Axonometry of the acoustic panel system

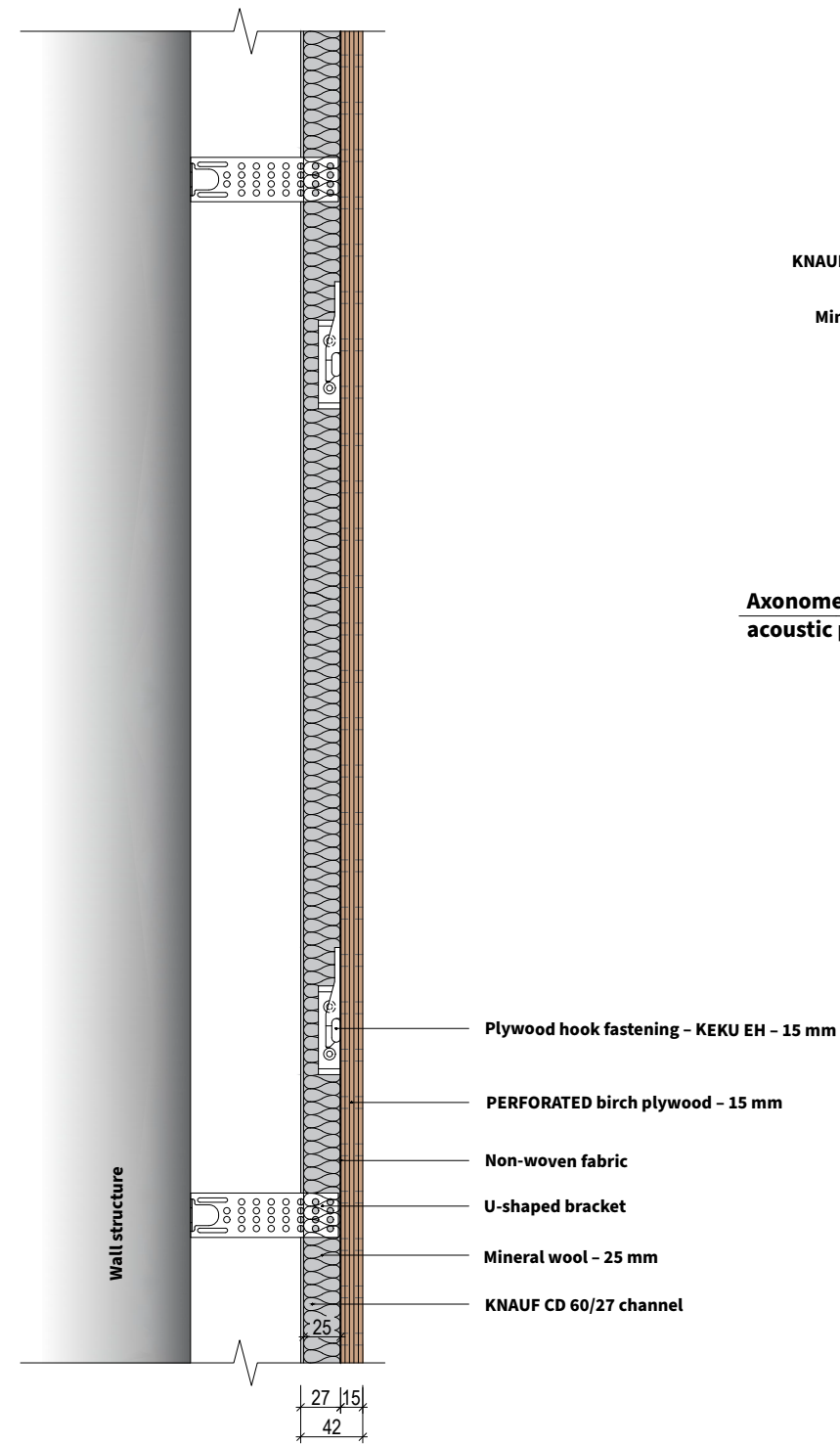


NOTES:

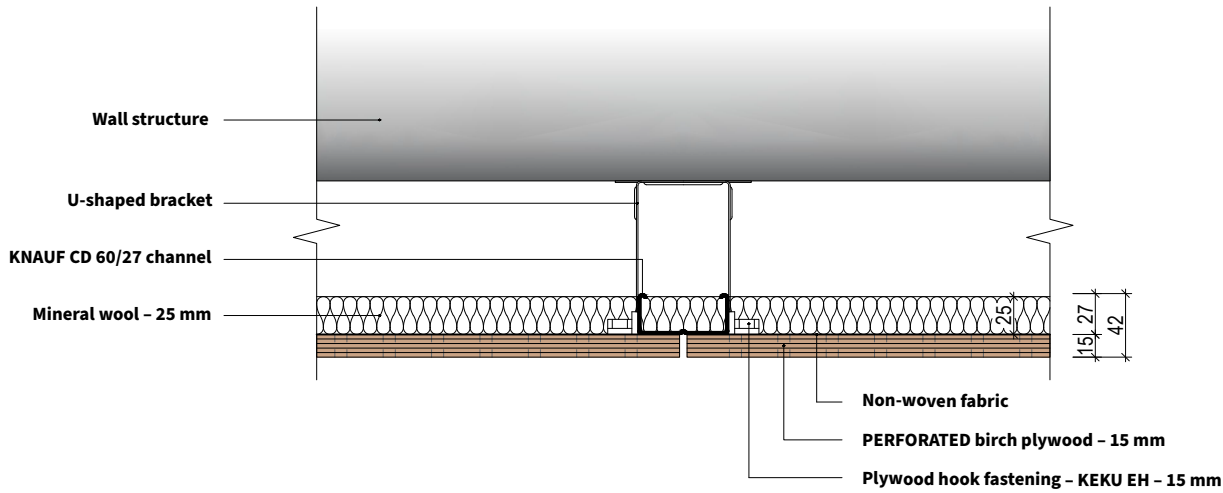
- 1. The drawing is for informational purposes only,
in case of discrepancies, please contact the manufacturer.**

PERFORATED panel installation method using
KNAUF CD channels and KEKU EH fasteners

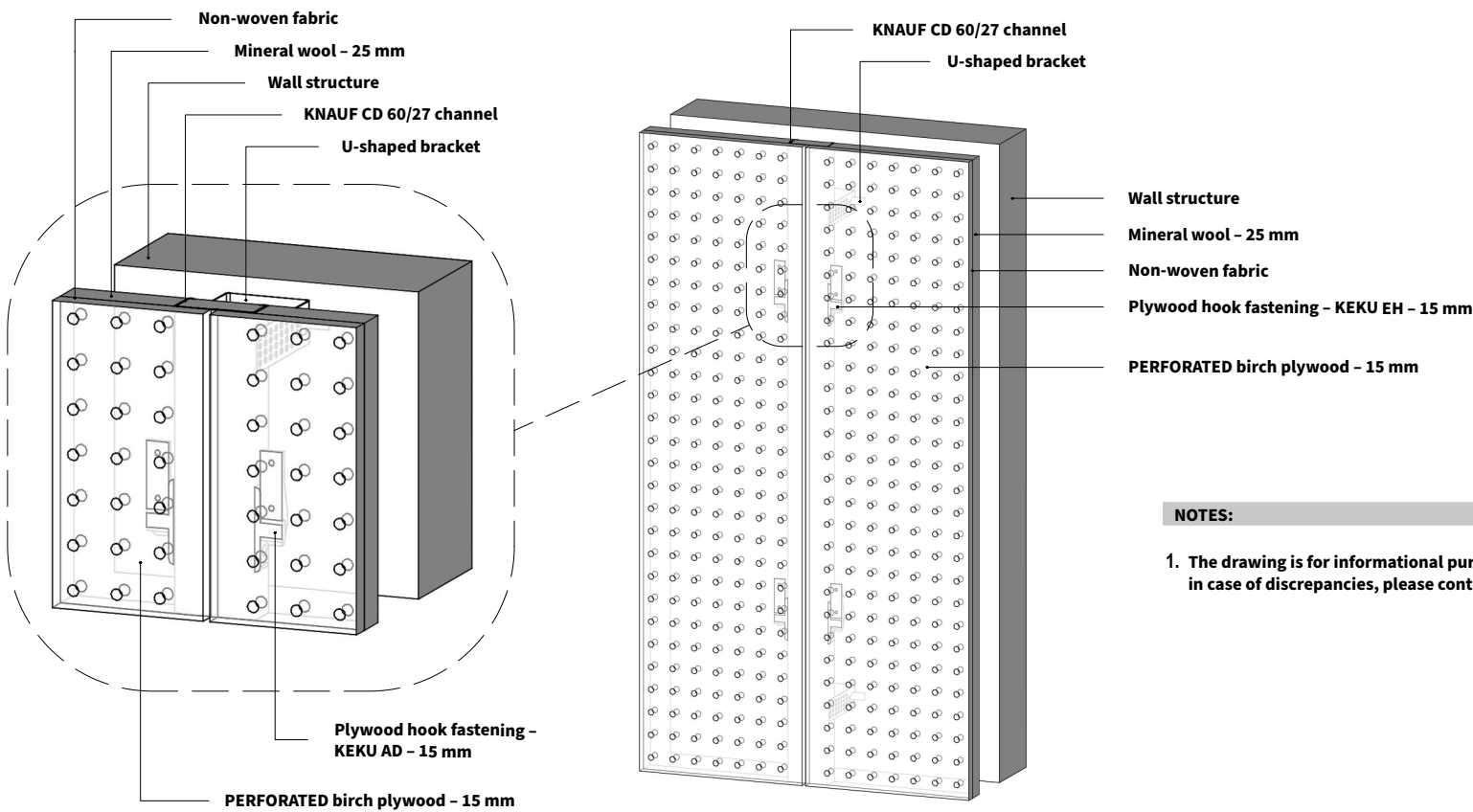
Acoustic panel mounting
system SECTION – Scale 1:5



Acoustic panel mounting
system TOP VIEW – Scale 1:5

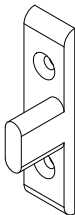


Axonometry of the
acoustic panel system



Fastening system KEKU EH

KEKU EH – to be fastened
to KNAUF channel



KEKU EH– to be fastened
to plywood panel.

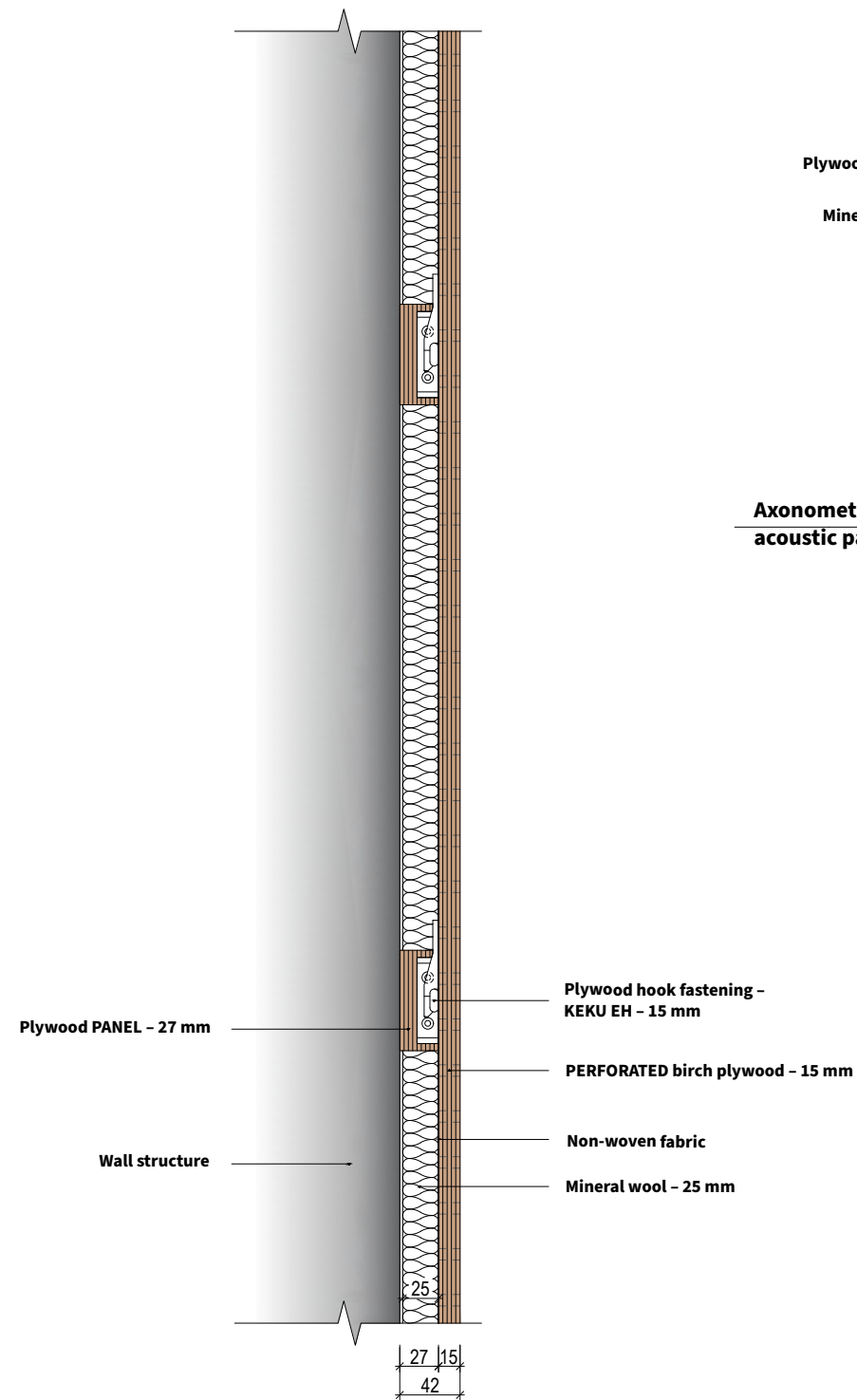


NOTES:

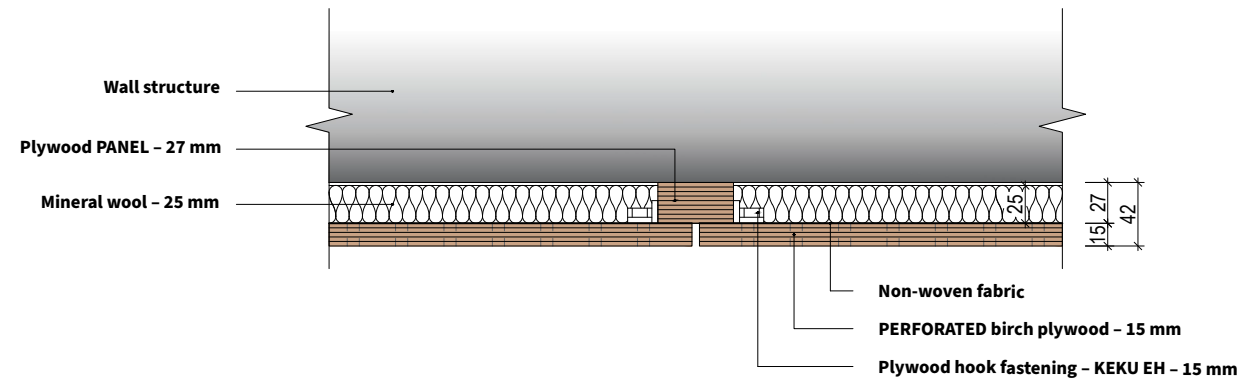
1. The drawing is for informational purposes only,
in case of discrepancies, please contact the manufacturer.

PERFORATED panel installation directly onto the wall surface using Keku EH fasteners

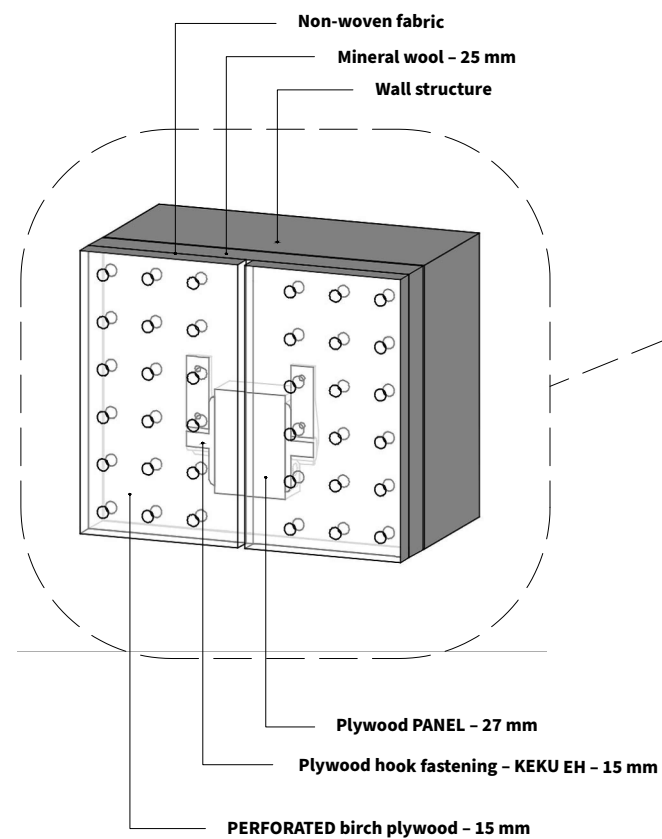
Acoustic panel mounting system SECTION – Scale 1:5



**Acoustic panel mounting
system TOP VIEW – Scale 1:5**

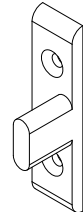


Axonometry of the acoustic panel system

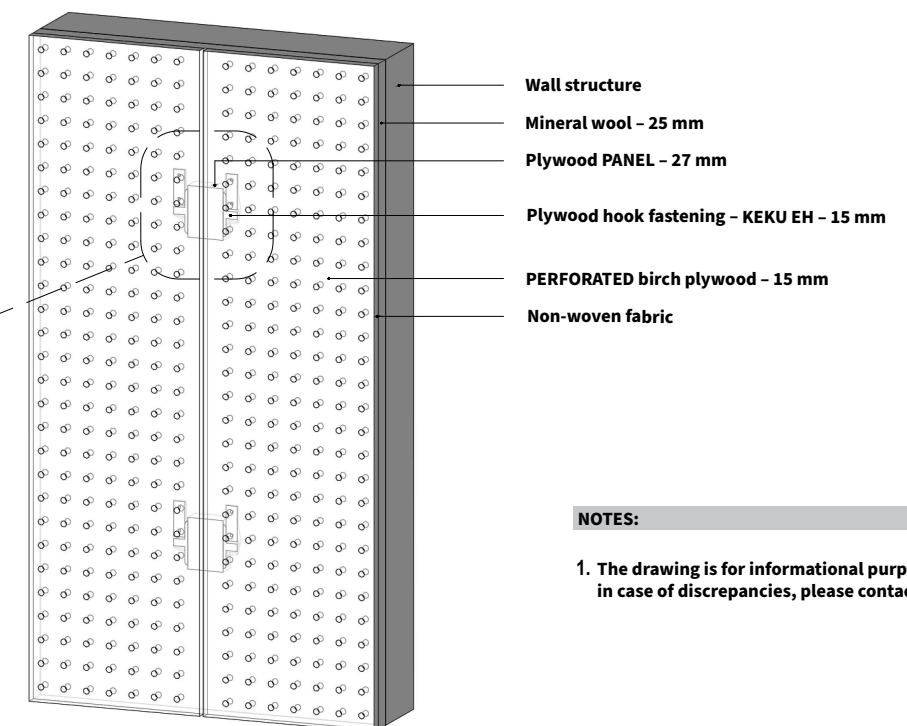
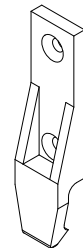


Fastening system KEKU EH

**KEKU EH – to be fastened
to KNAUF channel**



**KEKU EH- to be fastened
to plywood panel.**



NOTES:

**1. The drawing is for informational purposes only,
in case of discrepancies, please contact the manufacturer.**